



---

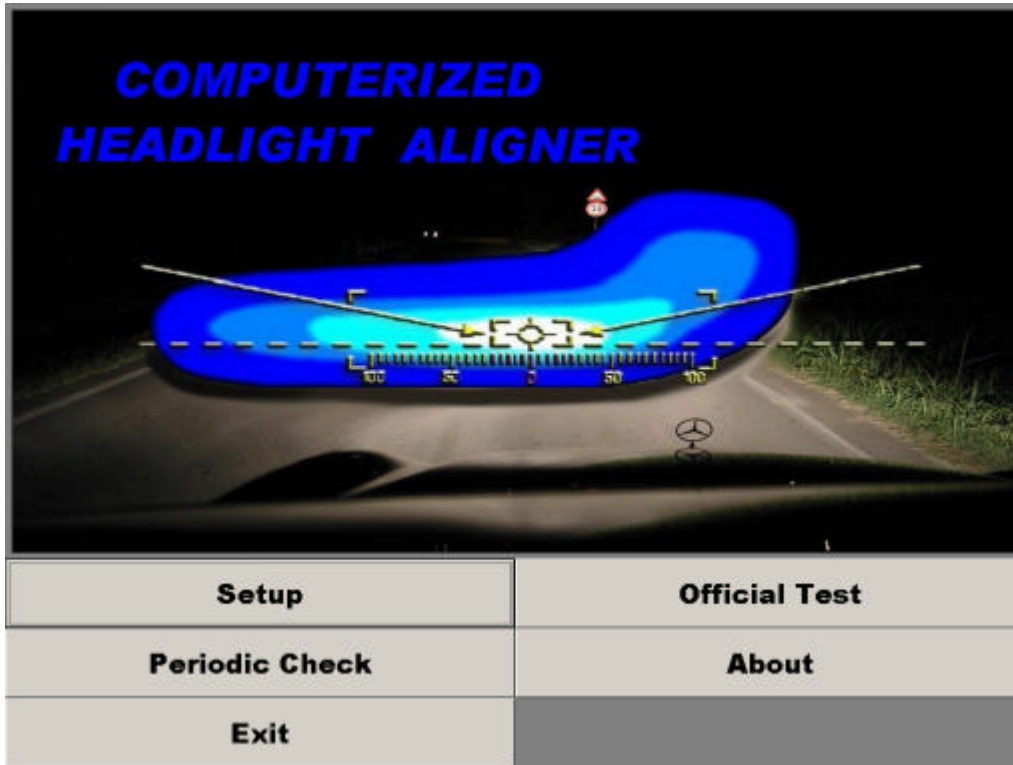
## Gemini

---

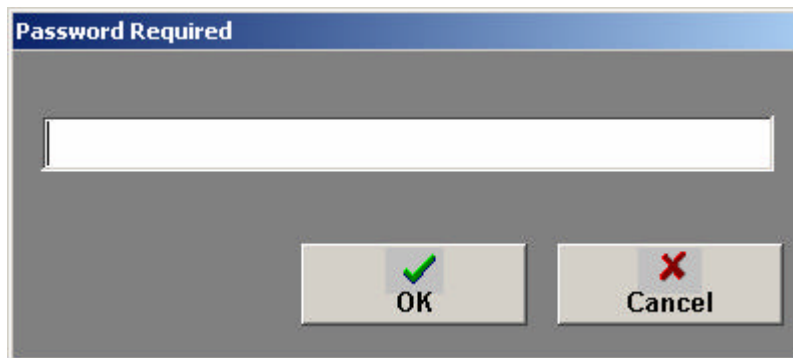
Camera on board  
Healight beam tester



MAIN MENU – ALL AVAILABLE OPERATIONS LISTED



UNIT SET-UP AND UNIT CALIBRATION CAN BE ENTERED ONLY THROUGH A PASSWORD

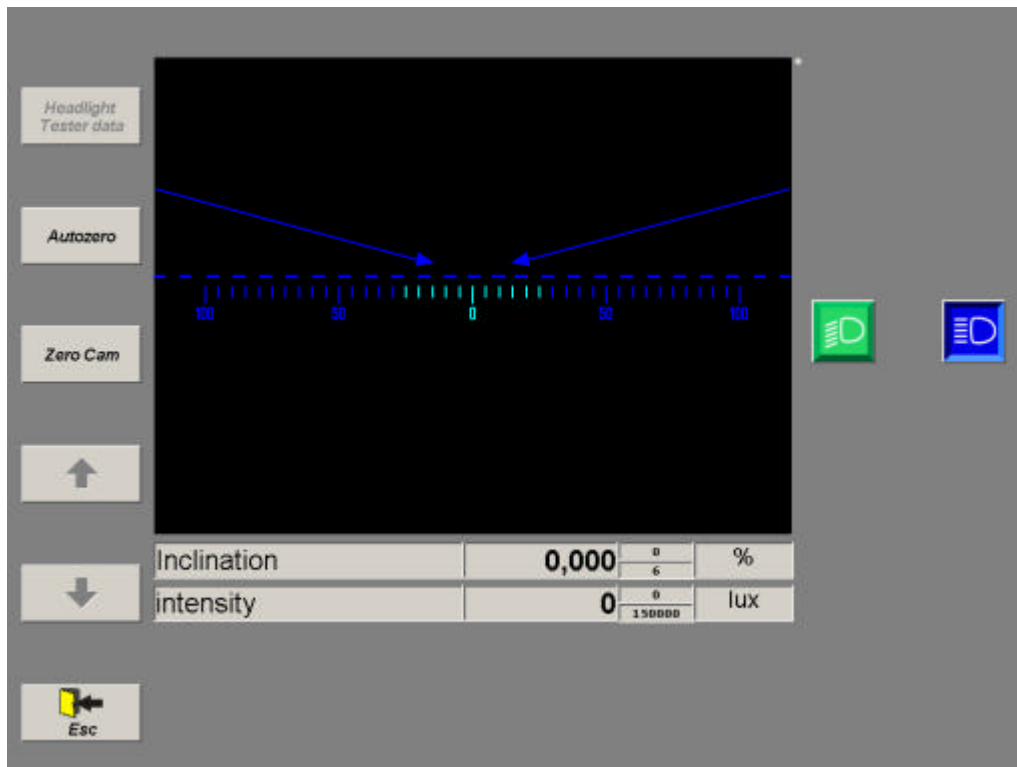
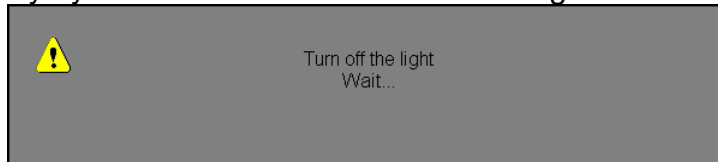


Set-up menu: 1) operator and headlight tester identification data can be registered;  
2) light intensity and mechanical tolerances can be registered



### Periodic check:

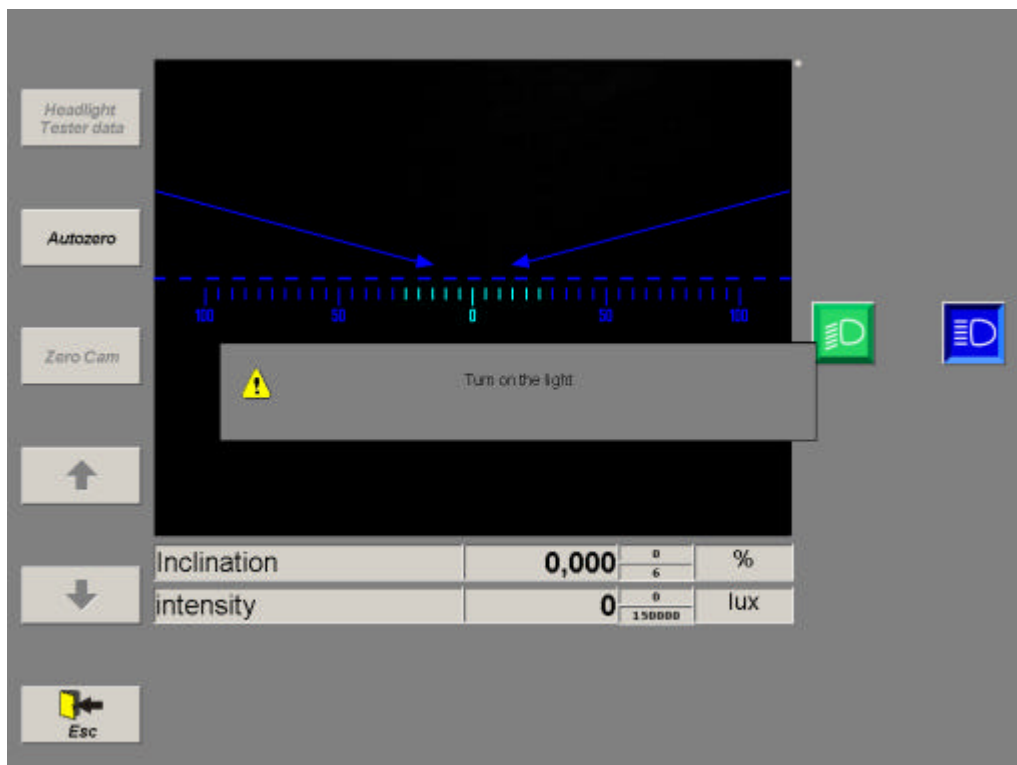
operations to be done only by skilled staff to correct low and high beam intensity reference values



The interface shows a central display with a scale from 100 to 0 to 100. Two blue lines with arrows point towards the center. Below the scale is a data table.

Inclination	0,000	$\frac{0}{6}$	%
intensity	0	$\frac{0}{150000}$	lux

Buttons on the left: "Headlight Tester data", "Autozero", "Zero Cam", an up arrow, a down arrow, and "Esc". On the right, there are two light icons: a green one and a blue one.



The interface is identical to the previous one, but a grey dialog box with a yellow warning triangle icon is overlaid on the central display. The text inside reads "Turn on the light.".

Headlight Tester data

Autozero

Zero Cam

↑

Inclination	0,000	$\frac{0}{6}$	%
intensity	23500	$\frac{0}{150000}$	lux
Input Gain	1,00		
Input Zero (Lum)	0		

↓

← Esc

Headlight Tester data

Autozero

Zero Cam

↑

Inclination	0,000	$\frac{0}{6}$	%
intensity	49000	$\frac{0}{150000}$	lux
Input Gain	2,00		
Input Zero (Lum)	0		

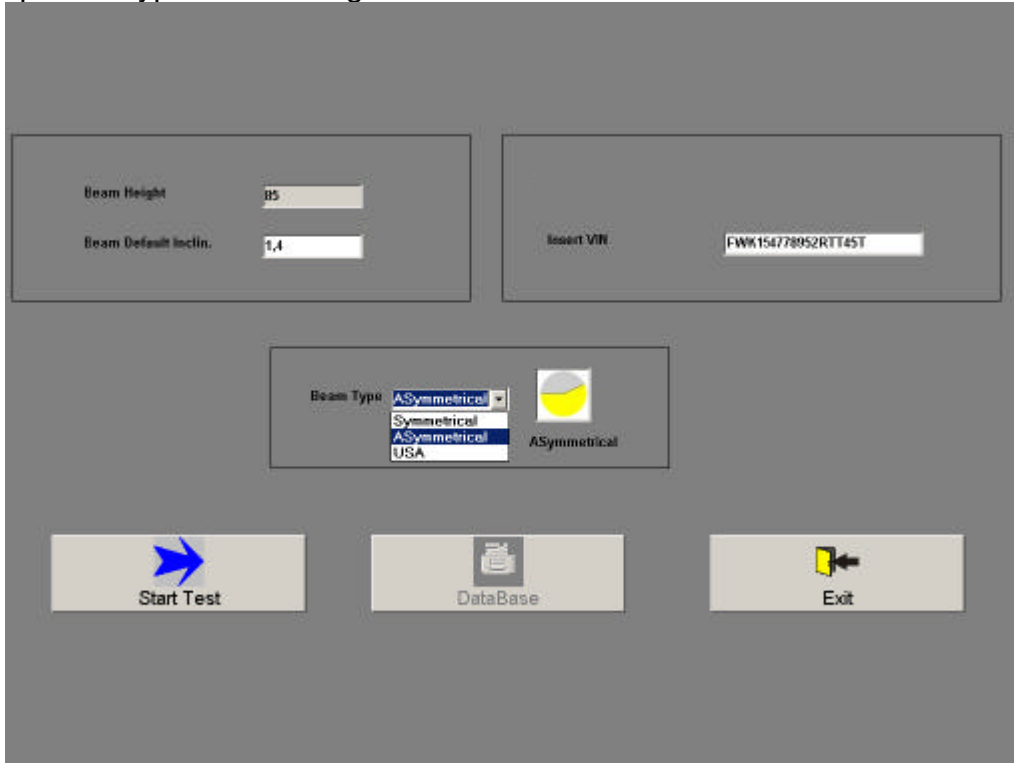
↓

← Esc

# HEADLIGHT BEAM TEST

## First menu:

Operator types beam height and beam default inclination of the low beam



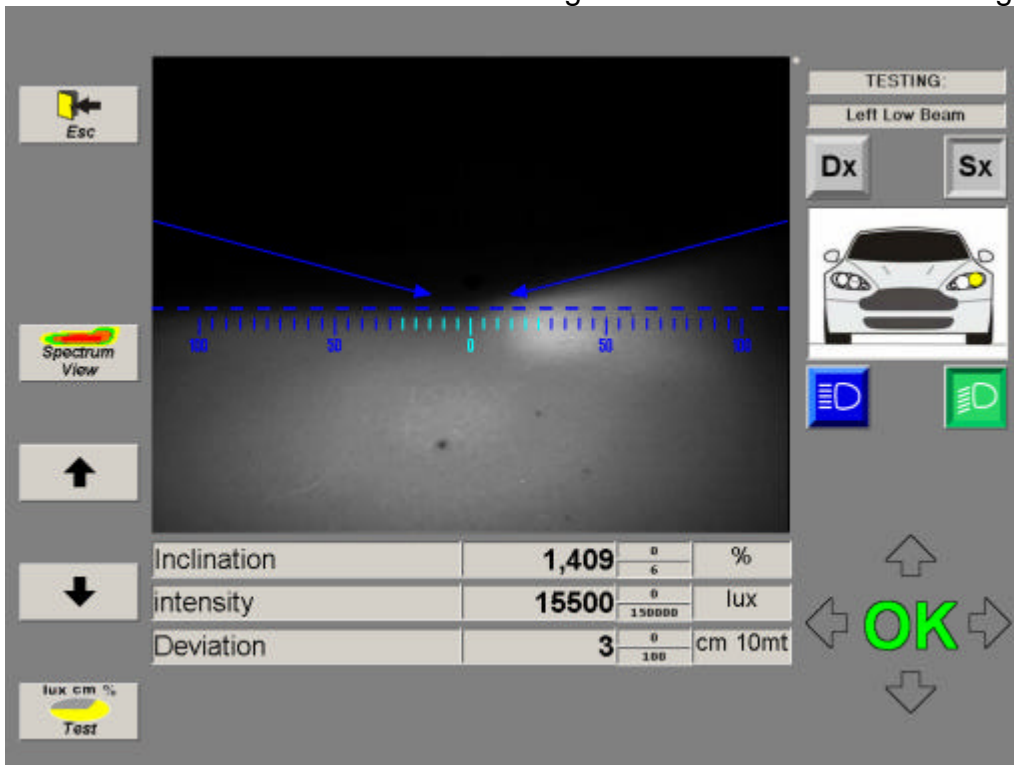
**Now test starts:** operator can read which is the beam under test from the right icon displayed.

Light image and light intensity are displayed together with pre-registered beam inclination.

Beam adjusting process is step by step up-dated with the data shown.

Beam adjusting operations to be done by operator are shown by the arrow icon in the left side of the display, showing if headlight is too high, too low, too left or too right.

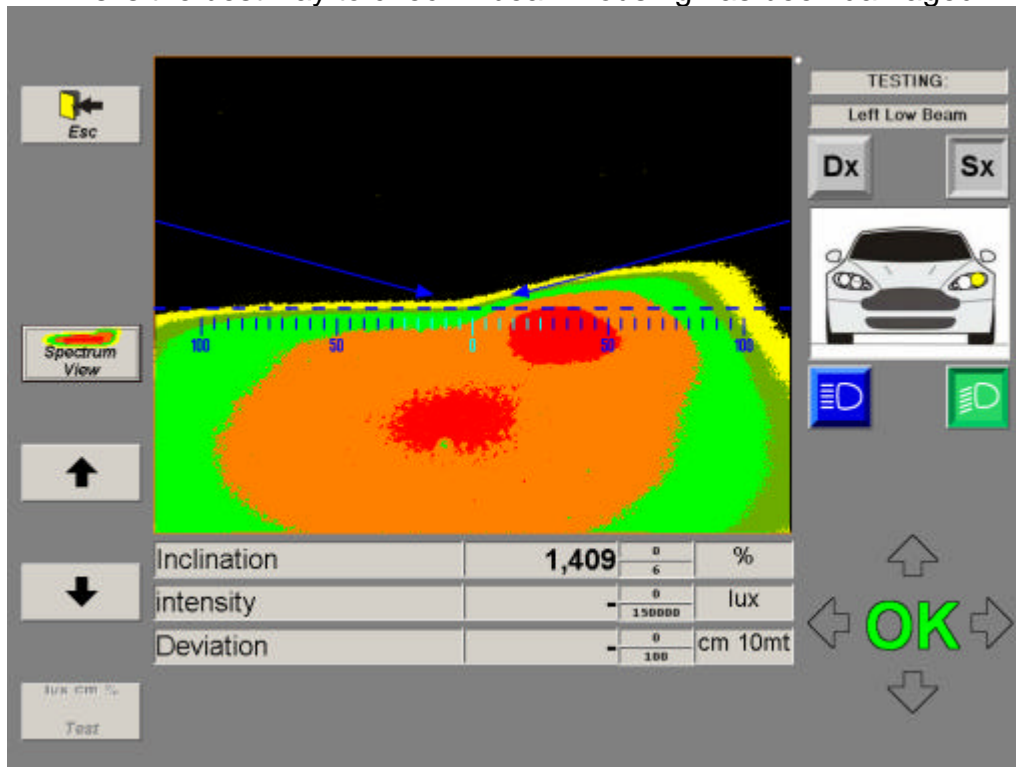
As soon as beam is centred icon will show the green OK as shown in following picture.



selecting “**spectrum view**”, a coloured view of the light shape is shown.

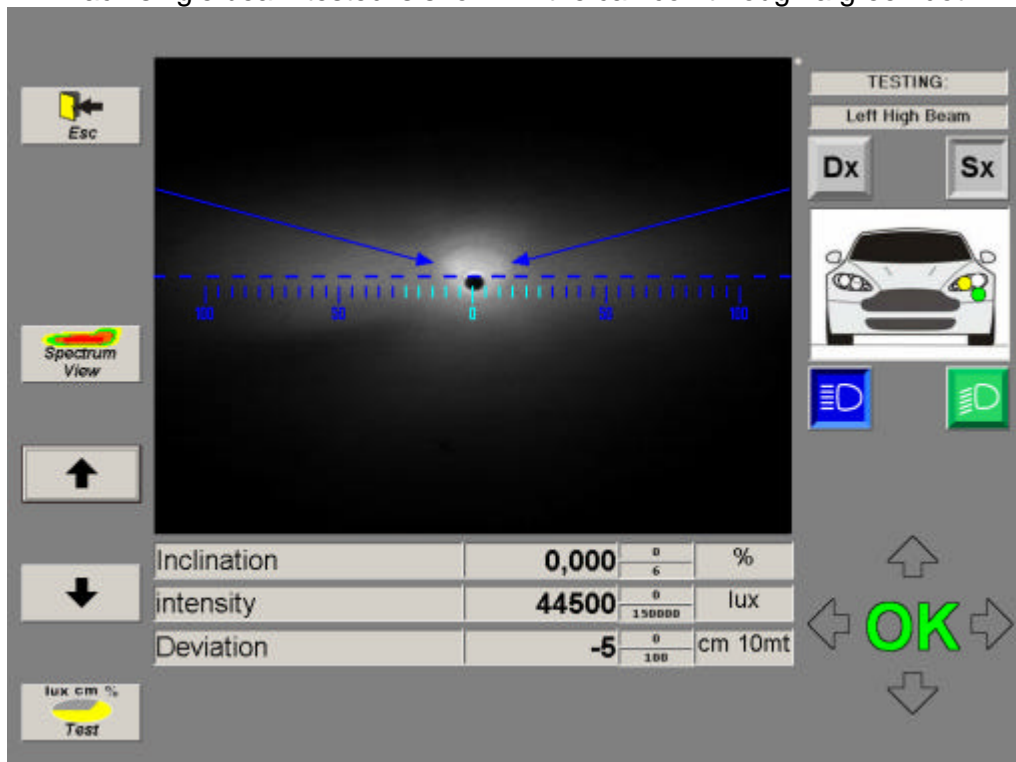
From red to green, detailing high intensity zone of the light.

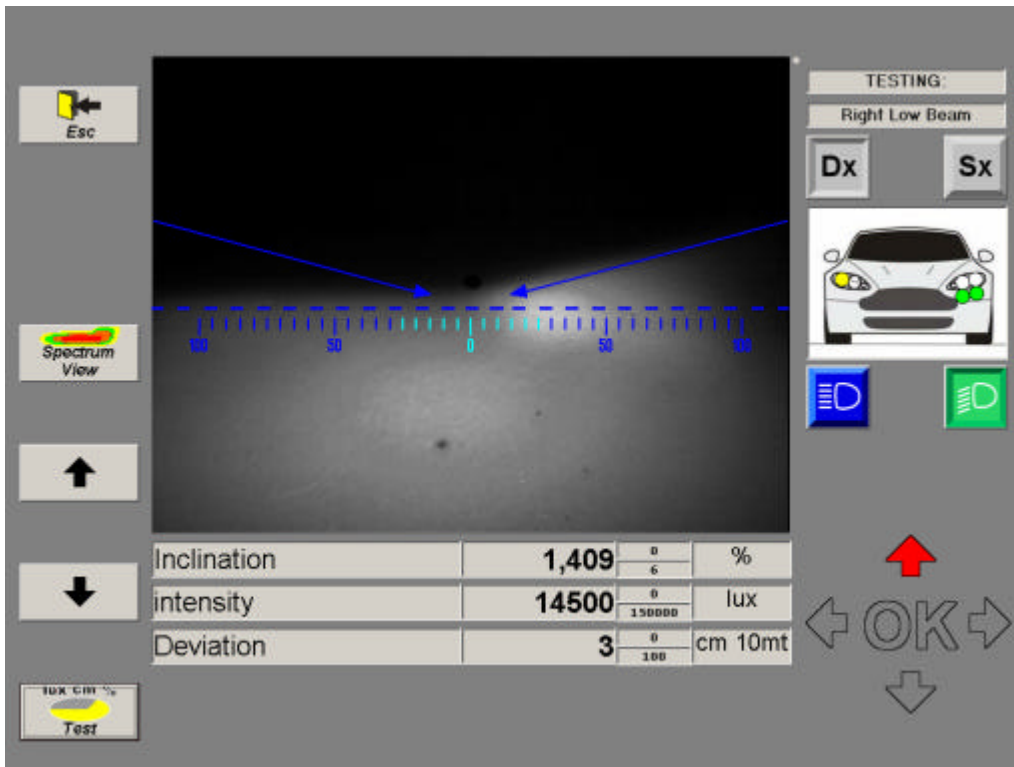
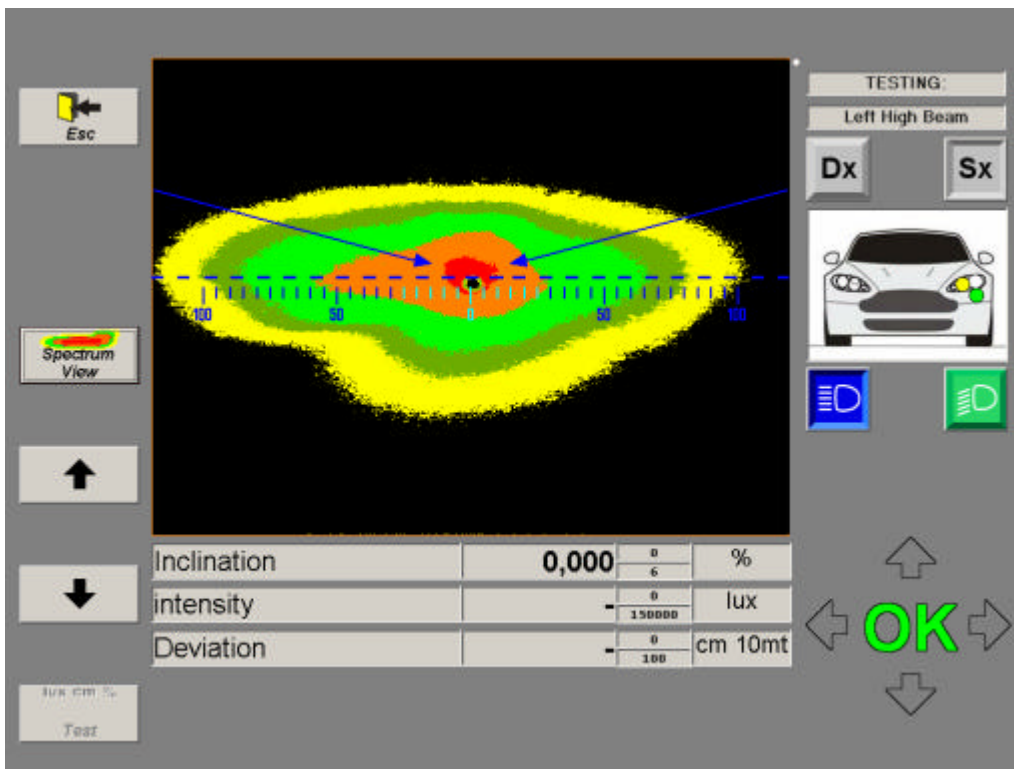
This is the best way to check if beam housing has been damaged.



Pressing **TEST** after one beam check, program records reading data and pass through beam other position.

Each single beam tested is shown in the car icon through a green dot.





Esc

Spectrum View

↑

↓

lux cm %  
Test

TESTING:

Right High Beam

Dx Sx

ⓘ ⓘ

⬅️ OK ➡️

⬆️ ⬆️

Inclination	<b>0,000</b>	0 6	%
intensity	-	0 150000	lux
Deviation	<b>-8</b>	0 100	cm 10mt

Esc

Spectrum View

↑

↓

lux cm %  
End Test

TESTING:

Right High Beam

Dx Sx

ⓘ ⓘ

⬅️ OK ➡️

⬆️ ⬆️

Inclination	-	0 6	%
intensity	-	0 150000	lux
Deviation	-	0 100	cm 10mt

## TEST PRINT OUT:

Each single beam tested, all readings data together with light view are shown on display. If adjustment doesn't result within selected parameters a red negative result will appear; in case test is a positive one, green line will be displayed.

All data and pictures can be also printed out.

### Headlight Tester Reading Result: **NEGATIVE**

**Beam Data**

Beam Height  
85

Beam Type  
ASymmetrical

Model  
PUNTO

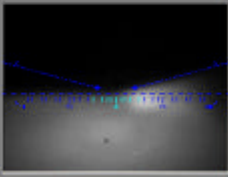
VIN  
FWK154778952RTT45T

Beam Default Incl.  
1,4

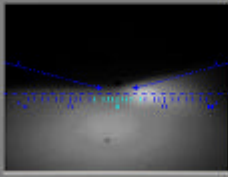
**Measurement Data**

	L.Beam Right	L.Beam Left	H.Beam Right	H.Beam Left
Vertical Inclination	1,409	1,409	0,000	0,000
Horizontal Deviation	2	2	-5	-3
Intensity [Lux x 1000]	14,5	16,5	41,5	42,5


Left Low Beam




Right Low Beam





Left High Beam




Right High Beam



 Print

 Back

 Esc